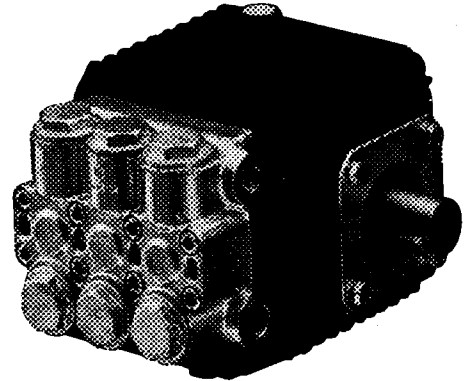


### FEATURES

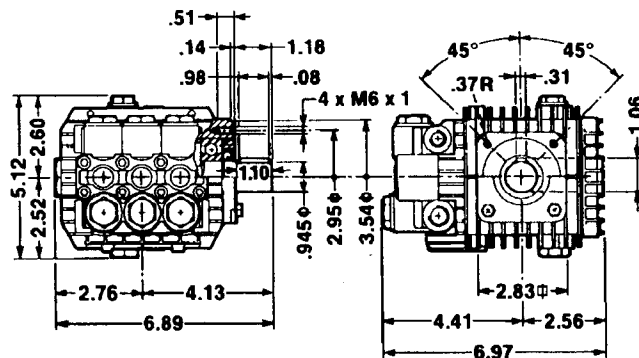
- Forged brass manifold with exclusive lifetime warranty
- Die cast, anodized aluminum, oil-bath crankcase
- Solid ceramic plungers with continuously lubricated packings
- The original Interpump unitized, stainless steel, K01 inlet and outlet valves
- Ideal for all general cleaning applications
- Standard with 24 mm solid shaft for pulley mount or direct drive with flex coupler and bell housing
- Also available in “L” left-handed versions

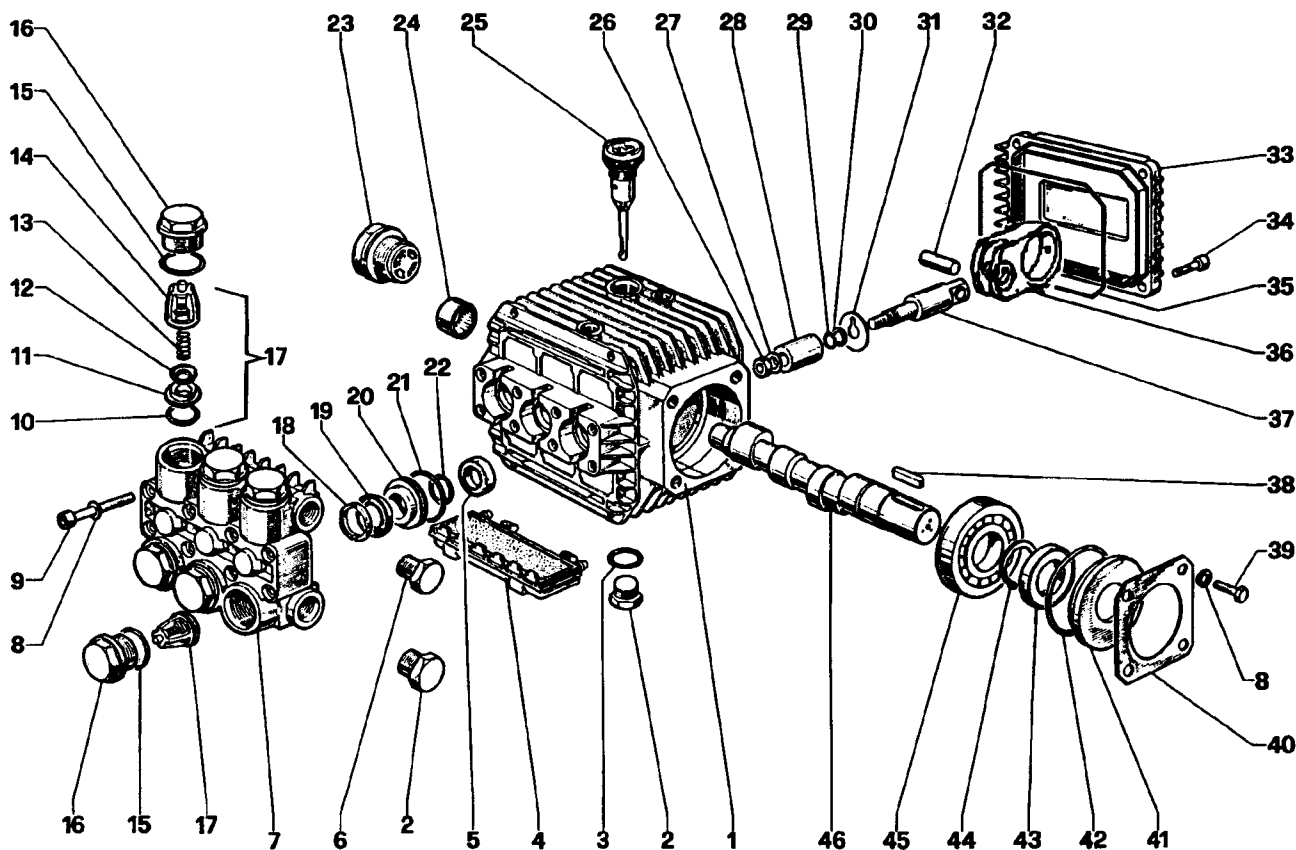


### SPECIFICATIONS

Pump Model	TP2021S17	TP2024S17	TP2032S17
Maximum Volume	2.1 GPM	2.4 GPM	3.2 GPM
Maximum Discharge Pressure	2500 PSI	2000 PSI	
Maximum Pump Speed	1750 RPM		
Maximum Inlet Pressure	125 PSI		
Maximum Inlet Vacuum	3 ft. water (2.6 in. Hg)		
Bore	.591 in. / 15 mm	.709 in. / 18 mm	
Stroke	.370 in. / 9.4 mm	.283 in. / 7.2 mm	.370 in. / 9.4 mm
Crankcase Oil Capacity	11.2 oz.		
Maximum Fluid Temperature	165°F		
Inlet Port Thread	3/8-19 BSPP-F		
Discharge Port Thread	1/4-19 BSPP-F		
Shaft Diameter	.945 in. / 24 mm		
Weight	11.2 lbs.		
Dimensions	7.0 x 6.9 x 5.1 in.		

### DIMENSIONAL DRAWING





## PARTS LIST

ITEM	PART NO.	DESCRIPTION	KIT NO.	QTY.	ITEM	PART NO.	DESCRIPTION	KIT NO.	QTY.	ITEM	PART NO.	DESCRIPTION	KIT NO.	QTY.
1.	51.0106.22	Crankcase		1	18.	51.1000.51	Head Ring	96,97	3	30.	90.5022.00	Back Up Ring		3
2.	98.2100.00	Plug		2	19.	51.1001.51	18mm	140,141		31.	96.7070.00	Flinger Washer		3
3.	90.3833.00	O-Ring		1	19.	90.2620.00	Packing	96,97	3	32.	97.7310.00	Connecting Rod Pin		3
4.	51.2091.02	Protector		1	19.	90.2681.00	18mm	140,141		33.	51.1600.22	Crankcase Cover		1
5.	90.1565.00	Oil Seal	83	3	20.	51.0800.70	Packing Retainer	86,96	3	34.	99.1867.00	Screw		4
6.	98.2041.00	Plug		1	20.	51.0803.70	18mm	139,140		35.	90.3917.00	Cover O-Ring		1
7.	51.1200.41	Manifold, Brass		1	21.	90.3604.00	O-Ring	86,96,97	3	36.	51.0301.22	Connecting Rod		3
8.	96.6938.00	Washer		8	21.	90.3604.00	18mm	139,140,141		37.	51.0500.56	Plunger Rod		3
9.	99.1943.00	Screw		8	22.	90.3835.00	O-Ring	86,96,97	3	38.	91.4878.00	Key		1
10.	90.3841.00	O-Ring	123	6	22.	90.3843.00	18mm	139,140,141		39.	99.1807.00	Screw		4
11.	36.2003.66	Valve Seat	123	6	23.	97.5968.00	Sight Gauge		1	40.	50.1500.74	Retainer		1
12.	36.2001.76	Valve Plate	123	6	24.	91.8015.00	Needle Bearing		1	41.	50.2115.51	Spacer		1
13.	94.7376.00	Spring	123	6	25.	98.2103.00	Oil Dip Stick		1	42.	90.4097.00	O-Ring		1
14.	36.2025.51	Valve Cage	123	6	26.	92.2216.00	Nut		3	43.	90.1634.00	Oil Seal		1
15.	90.3847.00	O-Ring		6	27.	96.7008.00	Washer		3	44.	90.0635.00	Snap Ring		1
16.	98.2216.00	Valve Cap		6	28.	51.0400.09	Plunger – 15mm		3	45.	91.8329.00	Bearing		1
17.	36.7115.01	Valve Assy.	123	6	28.	51.0401.66	Plunger – 18mm		3	46.	51.0204.65	Crankshaft		1
					29.	90.3572.00	O-Ring		3		51.0217.65	Crankshaft (TP2024)		

## REPAIR KITS

KIT NO.	83	86 (15mm)	96 (15mm)	97 (15mm)	123	139 (18mm)	140 (18mm)	141 (18mm)
ITEM NO.s INCLUDED IN KIT	5	20, 21, 22	18, 19, 20, 21, 22	18, 19, 21, 22	6, 7, 8, 10, 11, 12 (17)	20, 21, 22	18, 19, 20, 21, 22	18, 19, 21, 22
NUMBER OF ASSEMBLIES IN KIT	3	3	1	3	6	3	1	3
NUMBER OF CYLINDERS KIT WILL SERVICE	3	3	1	3	3	3	1	3

## TORQUE SPECS\*

Position	Ft.-lbs.
2	29.4
6	14.7
9	8.8
16	33.1
23	13.2
26	11.0
34	7.3
39	7.3

\*Decrease torque by 20% if threads are lubricated.